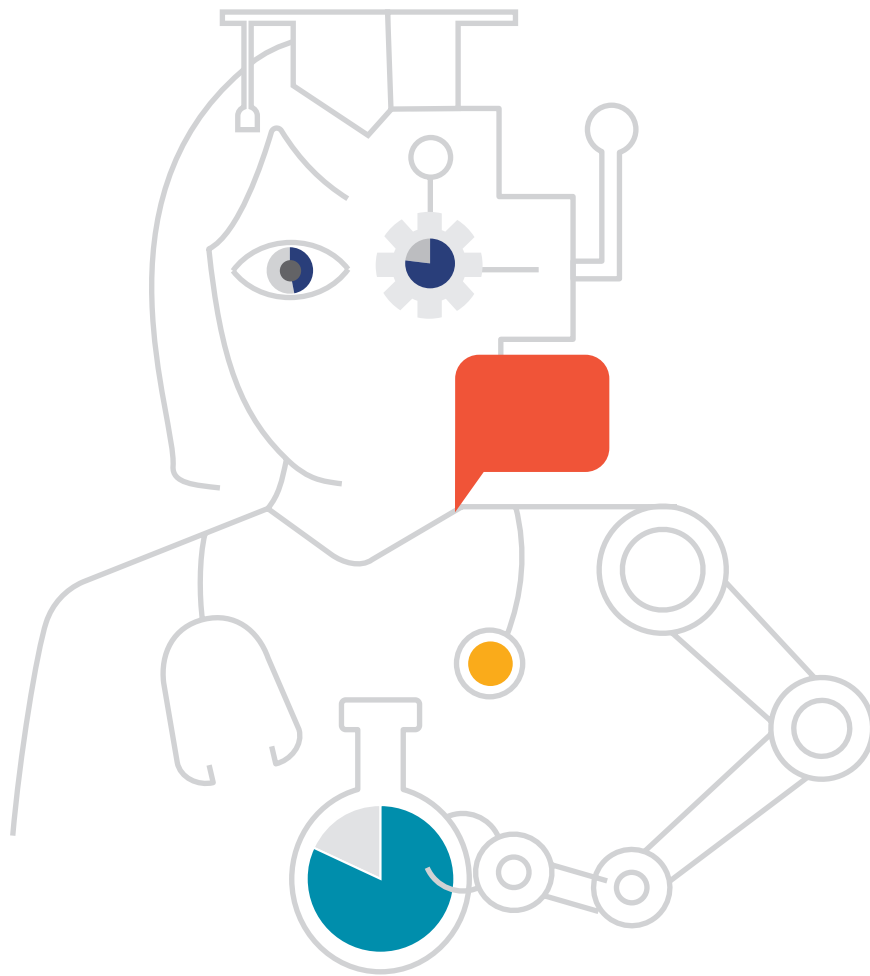




Department for
Business, Energy
& Industrial Strategy

KANTAR



Public Attitudes To Science

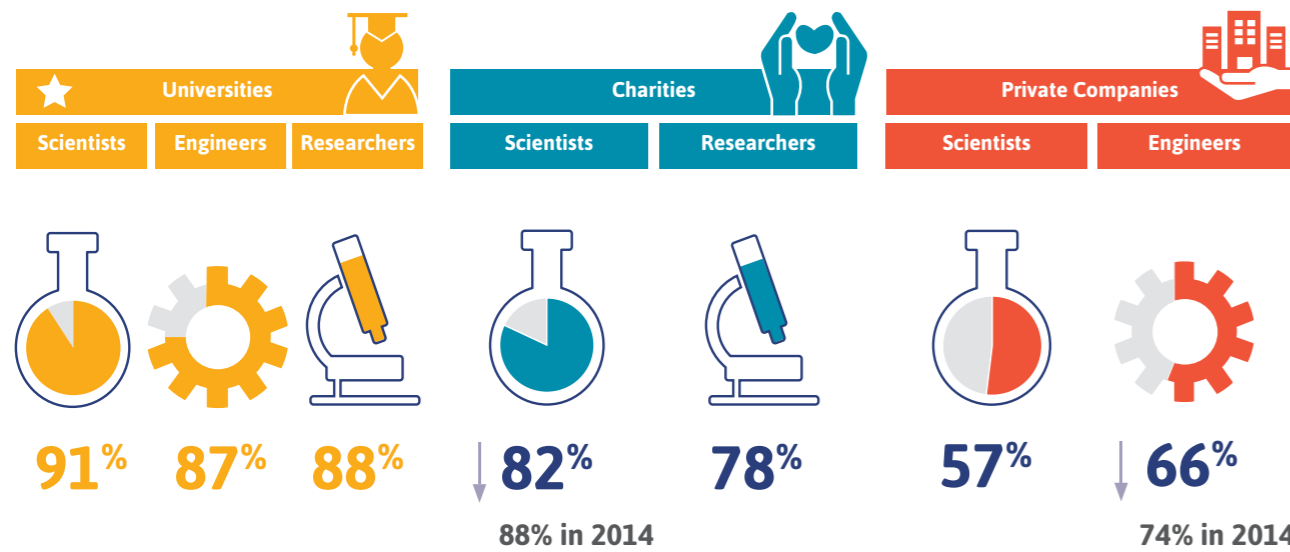
2019

Trust & Awareness in Science

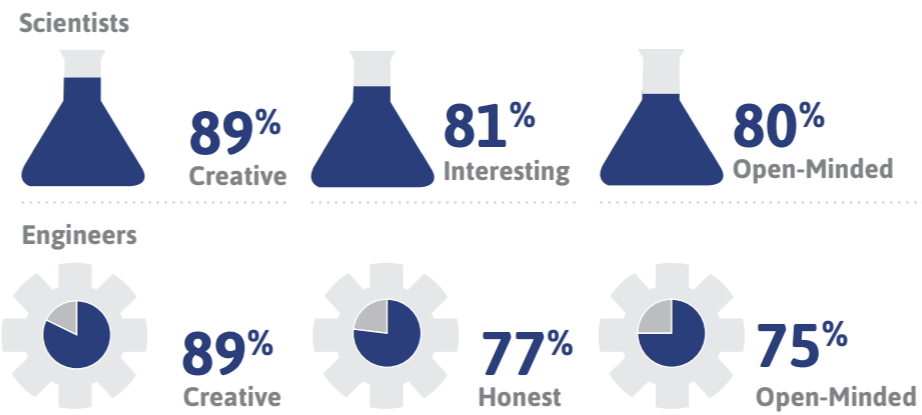
Trust

Levels of trust in scientists/engineers is linked to where they work

% who trust each of these to follow professional rules and regulations

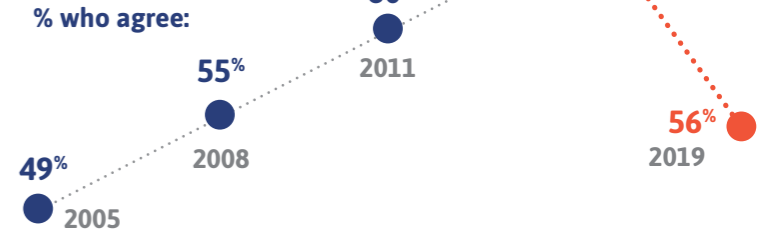


How scientists and engineers are perceived



Feelings of resigned trust

The proportion of people who feel that they have **no option but to trust those governing science** fell in 2019 after an increase over the previous decade

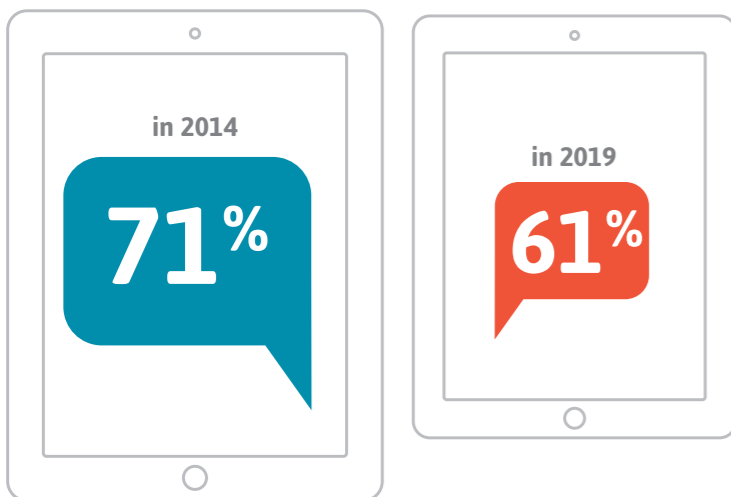


Support for funding in science

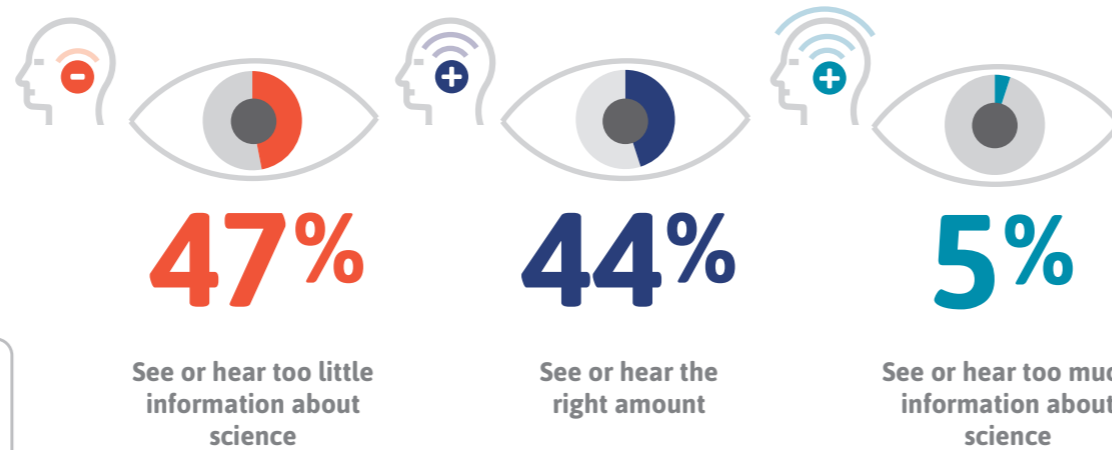


Media

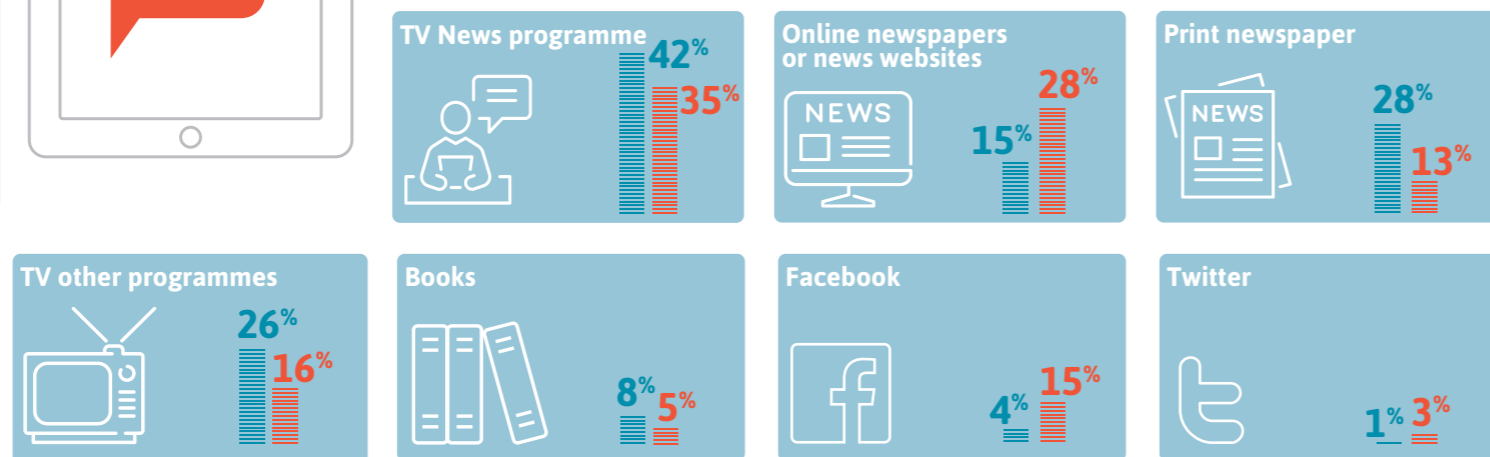
In 2019, there was a drop in the proportion who think that the media sensationalises science



There is an appetite for more information about science

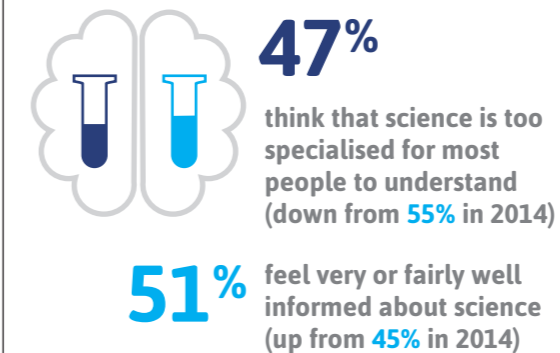


There has been a shift in how people access science information from print to online

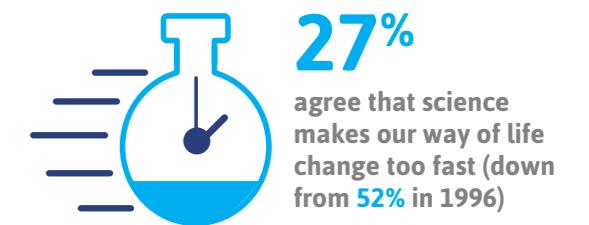


Accessibility of science

Since 2014, people find science more accessible



Over time the public is becoming more comfortable with the pace of scientific change



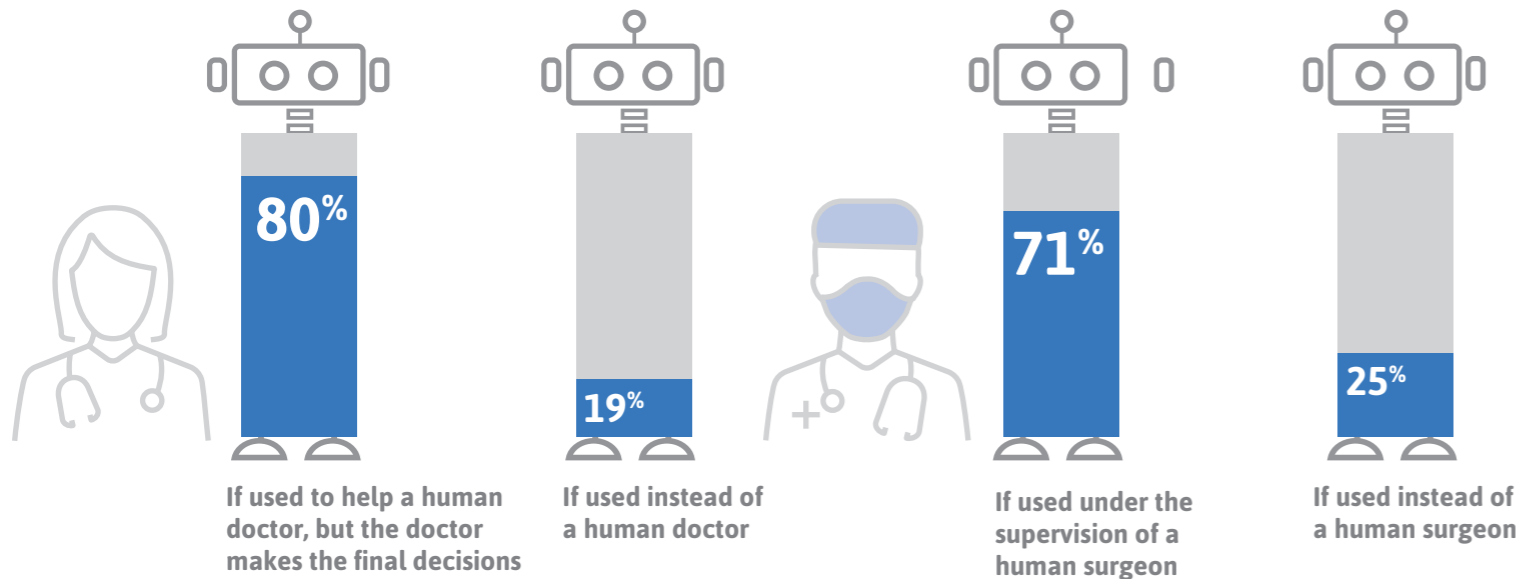
69% Feel that experts and not the public should advise the government about the implications of scientific development (up from 61% in 2008)

Attitudes to Health Technologies

The use of AI and robots in healthcare

Most people are open to the use of AI and robotics in healthcare but only when used to support rather than replace a doctor

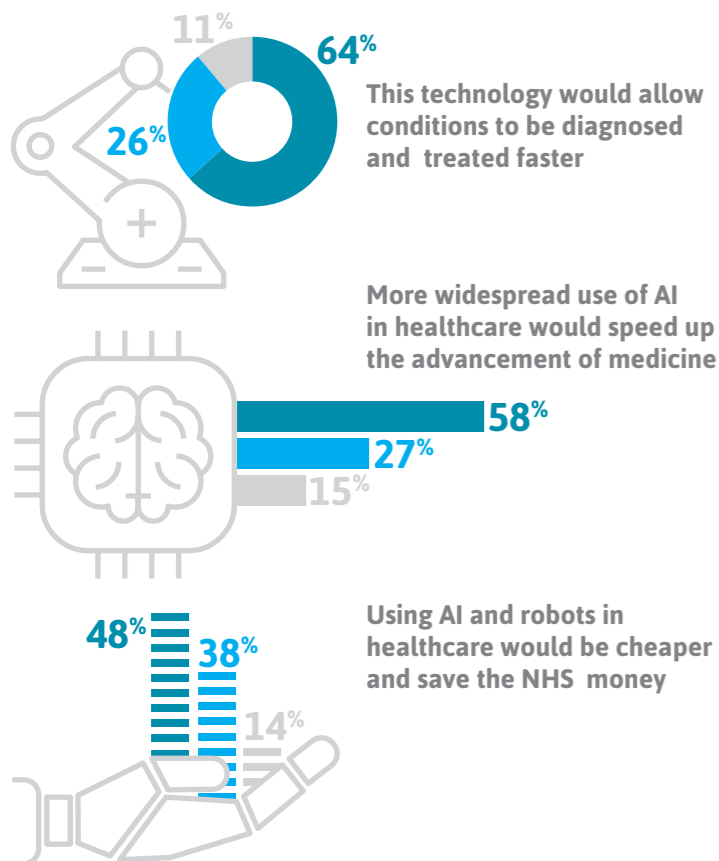
Percent of adults who feel comfortable in each of the following situations



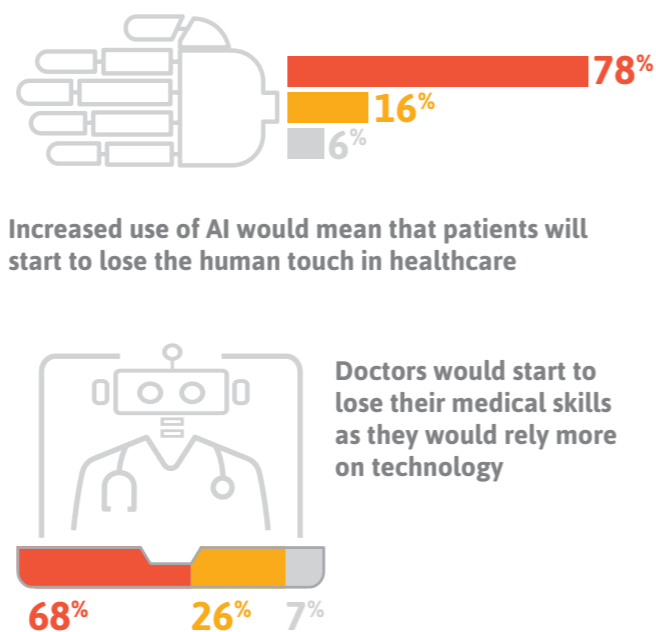
The public believes that AI and robots in healthcare will accelerate progress in medicine though they are concerned about the loss of human interaction

Percent who think this is:

Likely (dark blue) Not Likely (light blue) Don't Know (grey)

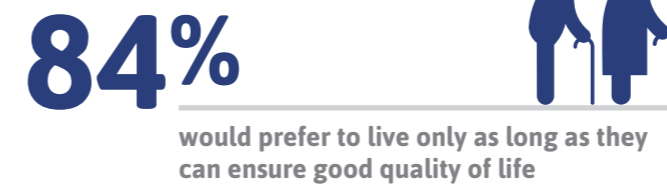


Likely (red) Not Likely (orange) Don't Know (grey)



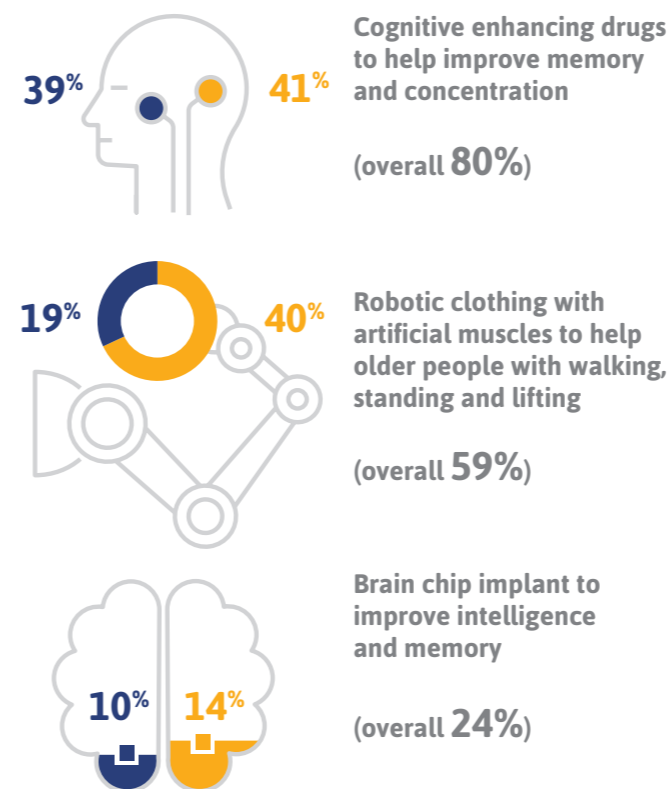
Ageing society

Most people prioritised quality of life over longevity

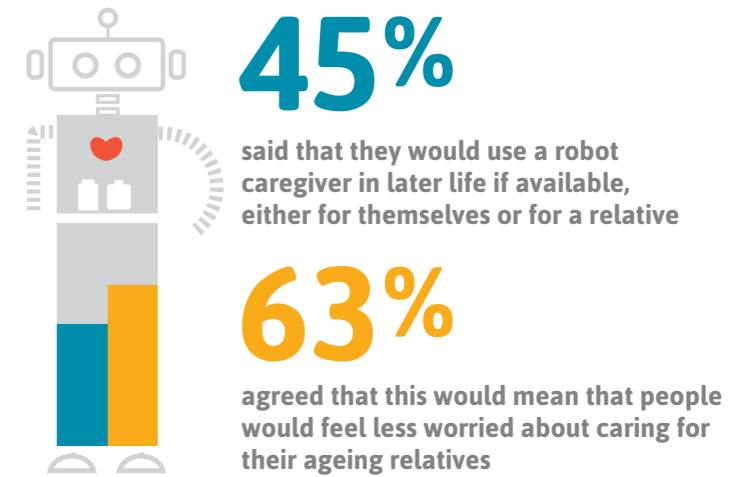


People are open to enhancement technologies to assist them in later life although they are less in favour of medically invasive technologies

Percent who said they would take up enhancement technologies to assist them in later life: Definitely (dark blue) Probably (orange)

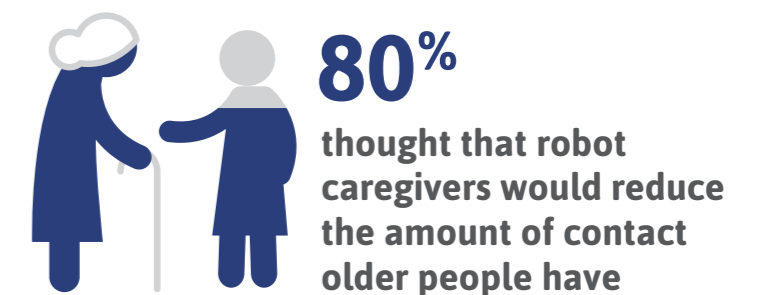
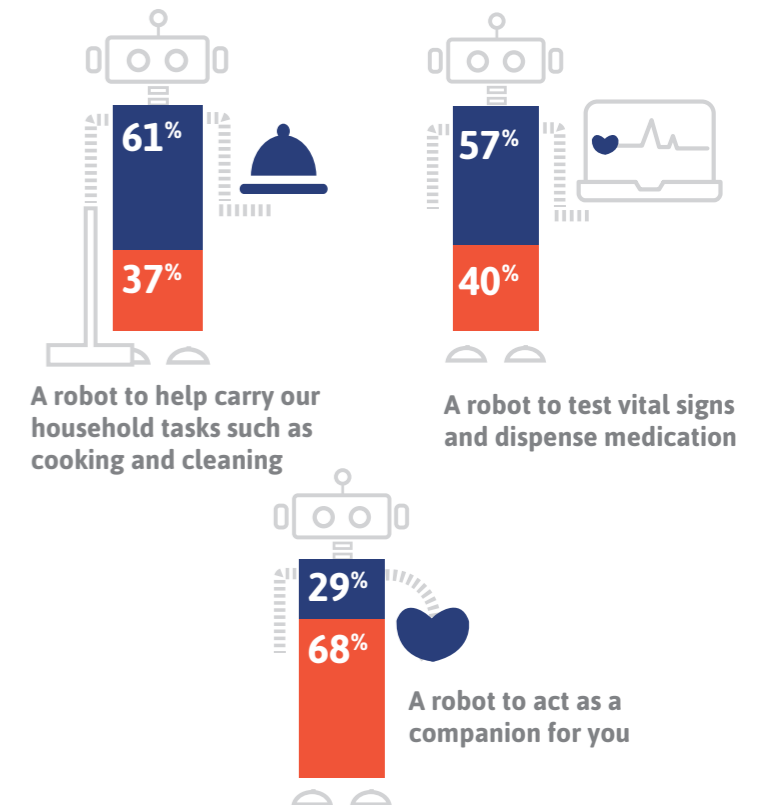


Around half of people are open to using robot caregivers to help with practical tasks in later life



Around six in ten felt comfortable with the idea of a robot helping with household tasks and healthcare, although people are concerned about loss of human contact

Percent of people who would feel: Comfortable (dark blue) or Uncomfortable (red) with using each of these in later life



Technical note:

Public Attitudes to Science 2019 (PAS 2019) is the sixth survey in a series of studies tracking attitudes to science, scientists and science policy among the UK public. The study was conducted by Kantar, on behalf of the Department for Business, Energy and Industrial Strategy (BEIS).

Kantar conducted 1,749 interviews with UK adults aged 16+. Interviews were carried out face-to-face between 17th January and 29th April 2019.

All figures are based on all respondents (1,749 UK adults aged 16+) except where other subgroups or previous survey years are shown.

For more information: Visit [kantar.com/uk-public-attitudes-to-science](https://www.kantar.com/uk-public-attitudes-to-science)